

If I Were A Shepherd

with Viola Obligato

Words and Music by
STEPHANIE K. ADAMS

Freely, Slowly ♩ = 65

Viola

Voice

Piano

mp with feeling

mp thoughtfully

1. If I were a
2. If I were a

light pedal throughout

5 Viola: 2nd and 4th verse only

p legato e cantabile ————— *mp* *p*

5

shep-herd, _____ I'd kneel be-fore the man-ger, though low-ly and a stran-ger, my
wise man, _____ I'd tra-vel from a-far, _____ I'd fol-low that great star _____ un-

If I Were A Shepherd

8

mp *p*

8

mp

gift would be my heart. If I were a shep-herd, I'd find the babe a - sleep there and
 til I found the child. If I were a wise man, I'd bring my fin - est gift, my

8

mp

11

mp

11

p

say a hum - ble prayer. If I were a shep - herd. If I were a shep - herd.
 vow to fol - low Him. If I were a wise man. If I were a wise man.

11

p

If I Were A Shepherd

14 *mf*

3.If I were an an - gel, _____ oh how I would re - joice, I'd

14 *mf*

8va

Detailed description: This system contains measures 14 to 16. The vocal line (treble clef) begins with a whole rest in measure 14, followed by a quarter rest, then a series of eighth and quarter notes. The piano accompaniment (grand staff) features a steady eighth-note bass line in the left hand and chords in the right hand. Dynamics include *mf* and *8va* markings.

17 *mp*

sing with my best voice, All glo - ry be to God. If I were an an - gel, _____ I'd

17 *mp*

8va

Detailed description: This system contains measures 17 to 19. The vocal line continues with eighth and quarter notes. The piano accompaniment maintains the eighth-note bass line. Dynamics include *mp* and *8va* markings.

20 *mf* *f* *mf*

join the heaven-ly cho - rus. Praise God, He sent Christ for us. Ho - san - na to His name! If I were an

20 *mf* *f* *mf*

sustain bass notes with pedal

Detailed description: This system contains measures 20 to 24. The vocal line features a crescendo to *f* in measure 22, followed by a decrescendo to *mf*. The piano accompaniment includes a *mf* marking and a *sustain bass notes with pedal* instruction at the bottom. The bass line consists of sustained notes with a pedal effect.

If I Were A Shepherd

23

Viola

23

Voice

an - gel. 4. I'm not a

with conviction mp a tempo

23

Piano

p *slowing* *mp* *a tempo*

27

Viola: 4th verse

mp legato e cantabile *mf* *mp*

27

shep - herd. I'm not a travel - ing wise man. I'm not a sing - ing an - gel. I

27

mf

The image shows a page of a musical score for the piece 'If I Were A Shepherd'. It features three staves: Viola, Voice, and Piano. The score is in 3/4 time and the key signature has two flats (B-flat and E-flat). The first system (measures 23-26) shows the Viola with rests, the Voice with the lyrics 'an - gel.' and '4. I'm not a', and the Piano with accompaniment. The Piano part includes dynamic markings *p*, *slowing*, and *mp*, and a tempo change to *a tempo*. The second system (measures 27-30) is labeled 'Viola: 4th verse' and shows the Viola with a melodic line, the Voice with the lyrics 'shep - herd. I'm not a travel - ing wise man. I'm not a sing - ing an - gel. I', and the Piano with accompaniment. The Piano part includes a dynamic marking of *mf*.

If I Were A Shepherd

30

mf *mp*

30

mf *mp* *mf*

love Him just the same. I'm a dis - ci - ple. I choose to love and serve Him, to

30

mf *mp* *mf*

sustain bass notes with pedal

33

mf

33

mp

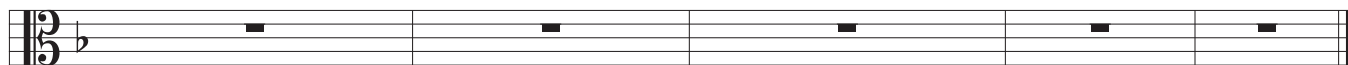
fol - low His com - mand - ments, to take up - on His name. I'm a dis - ci - ple.

33

mp

If I Were A Shepherd

36



36

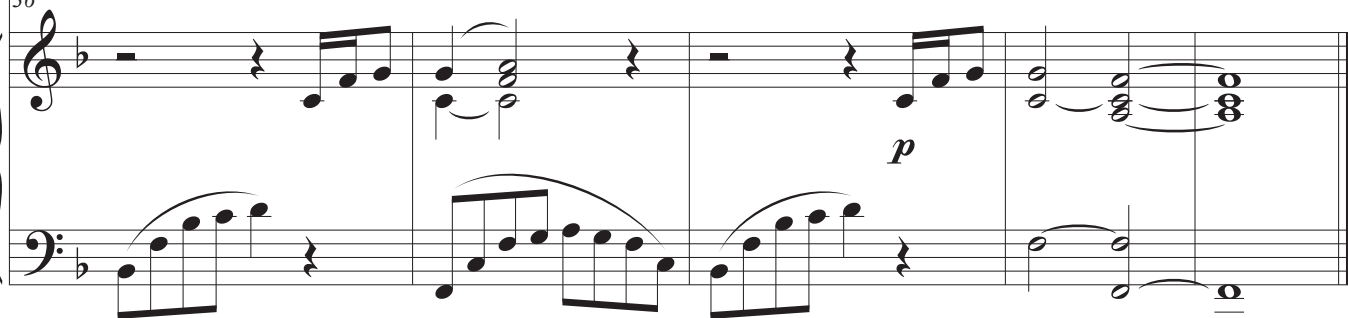


I'm a dis - ci - ple.

p

I'm a dis - ci - ple. _____

36



p

pp