

If I Were A Shepherd

with Viola Obligato

Words and Music by
STEPHANIE K. ADAMS

Freely, Slowly ♩ = 65

Viola

Voice

Piano

mp with feeling

mp thoughtfully

1. If I were a
2. If I were a

light pedal throughout

5 Viola: 2nd and 4th verse only

p legato e cantabile ————— *mp* *p*

5

shep-herd, _____ I'd kneel be-fore the man-ger, though low-ly and a stran-ger, my
wise man, _____ I'd tra-vel from a-far, _____ I'd fol-low that great star _____ un-

If I Were A Shepherd

8

mp *p*

8

mp

gift would be my heart. If I were a shep-herd, _____ I'd find the babe a - sleep there and
 til I found the child. If I were a wise man, _____ I'd bring my fin - est gift, _____ my

8

mp

11

mp

11

p

say a hum - ble prayer. If I were a shep - herd. If I were a shep - herd.
 vow to fol - low Him. If I were a wise man. If I were a wise man.

11

p

If I Were A Shepherd

14 *mf* with great joy

3.If I were an an - gel, _____ oh how I would re - joice, I'd

14 *mf*

17 *mp*

sing with my best voice, All glo - ry be to God. If I were an an - gel, _____ I'd

17 *mp*

20 *mf* *f* *mf*

join the heaven-ly cho-rus. Praise God, He sent Christ for us. Ho - san-na to His name! If I were an

20 *mf* *f* *mf*

sustain bass notes with pedal

The image shows a musical score for the hymn 'If I Were A Shepherd'. It consists of three systems of music, each with a vocal line and a piano accompaniment. The key signature is B-flat major (two flats). The first system starts at measure 14. The vocal line begins with a rest, followed by the lyrics '3.If I were an an - gel, _____ oh how I would re - joice, I'd'. The piano accompaniment features a melody in the right hand and a bass line in the left hand. The second system starts at measure 17. The vocal line continues with 'sing with my best voice, All glo - ry be to God. If I were an an - gel, _____ I'd'. The piano accompaniment continues with similar melodic and harmonic patterns. The third system starts at measure 20. The vocal line concludes with 'join the heaven-ly cho-rus. Praise God, He sent Christ for us. Ho - san-na to His name! If I were an'. The piano accompaniment includes dynamic markings of *mf*, *f*, and *mf*. At the bottom of the page, there are five bass notes with a pedal symbol (a triangle) and the instruction 'sustain bass notes with pedal'.

If I Were A Shepherd

23

Viola

23

Voice

an - gel. 4. I'm not a

with conviction mp a tempo

23

Piano

p *slowing* *mp a tempo*

27

Viola: 4th verse

mp legato e cantabile *mf* *mp*

27

shep - herd. I'm not a travel - ing wise man. I'm not a sing - ing an - gel. I

27

mf

If I Were A Shepherd

30

love Him just the same. I'm a dis - ci - ple. I choose to love and serve Him, to

30

love Him just the same. I'm a dis - ci - ple. I choose to love and serve Him, to

30

love Him just the same. I'm a dis - ci - ple. I choose to love and serve Him, to

sustain bass notes with pedal

33

fol - low His com - mand - ments, to take up - on His name. I'm a dis - ci - ple.

33

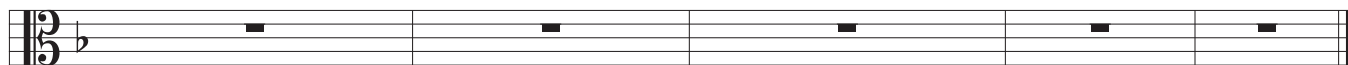
fol - low His com - mand - ments, to take up - on His name. I'm a dis - ci - ple.

33

fol - low His com - mand - ments, to take up - on His name. I'm a dis - ci - ple.

If I Were A Shepherd

36



36

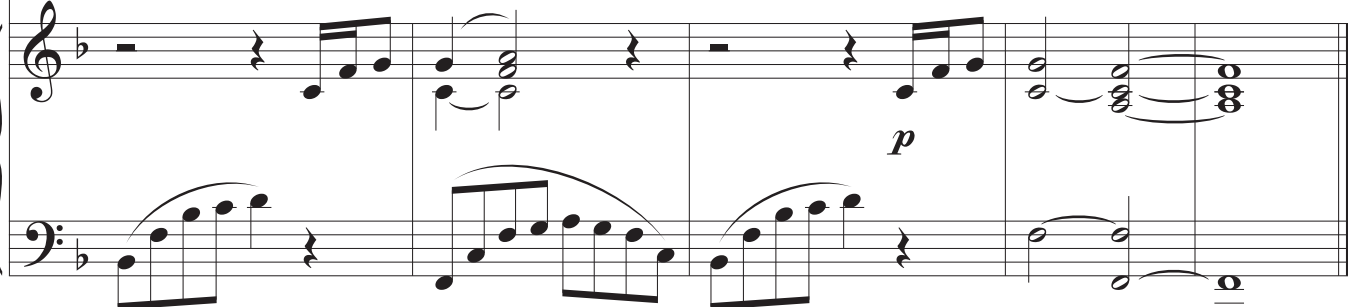


I'm a dis - ci - ple.

p

I'm a dis - ci - ple. _____

36



p

pp